

GYPROCK™

Everything else is just plasterboard

Covering a Masonry Wall with Gyprock™ Plasterboard

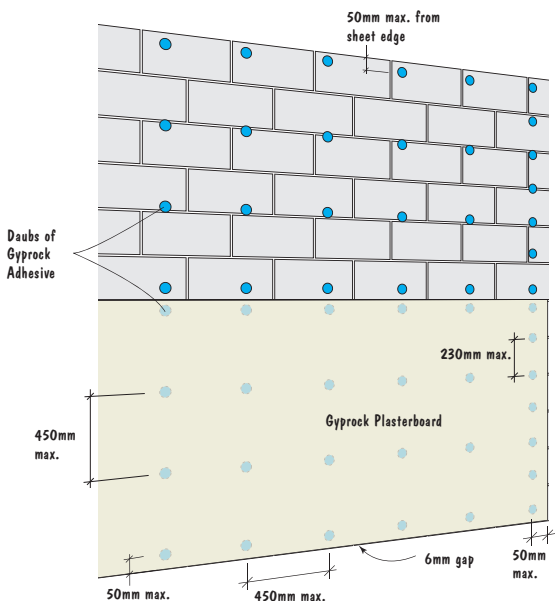
Shopping List

- Gyprock™ Plasterboard
- Gyprock™ Masonry Adhesive and 38mm broadknife
- Hand saw, trimming knife and straight edge
- If using 'Irregular Surface Method' – Beta Fix Clips,
- furring channels, J-track, chalk line, tin snips, drill, masonry anchors, level, gloves and safety goggles
- ★ Gyprock™ DIY guides – Jointing Gyprock™ Plasterboard, and Finishing Corners

Interior brick and block walls can be updated by lining them with plasterboard and then setting joints and decorating. If the wall surface is even, plasterboard can be adhesive fixed as shown in 'Regular Wall Surface'. If it has hollows or protrusions that exceed 15mm, follow the furring channel option in 'Irregular Wall Surfaces' (overleaf). Also refer to DIY guide – Getting Started with Gyprock™ Plasterboard.

Fixing to Regular Wall Surfaces

- 1 Remove any paint with a wire brush or grinder. Paint need only be removed where the adhesive is to be located.
- 2 Mix Masonry Adhesive with water in a clean bucket as per the package instructions.
- 3 Sheets are usually fixed horizontally to reduce the number of joints. Use full sheets across a room wherever possible. Apply daubs of adhesive to the wall about 50mm in diameter and 15mm thick, 50mm from sheet edges and spaced at 230mm to board ends and at 460mm centres elsewhere. Alternatively, apply the adhesive to the board.
- 4 Position each board against the wall and use a straight edge to tap it into alignment vertically and horizontally and check with a spirit level. Hold in position by propping or with masonry nails, and do not disturb for 24 hours or until the adhesive sets.



GYPROCK™

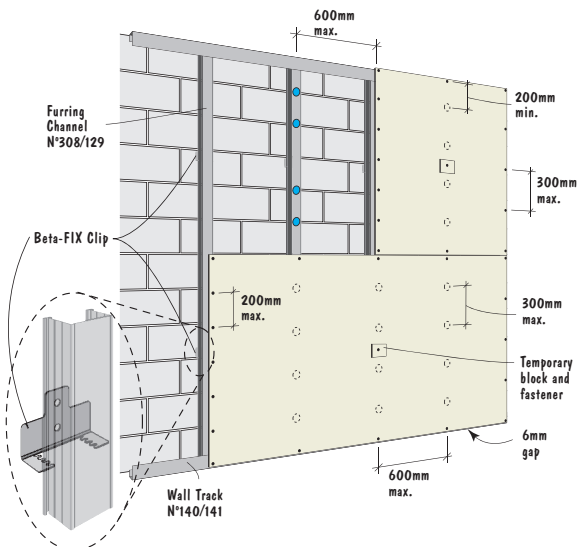
Everything else is just plasterboard

Covering a Masonry Wall with Gyprock™ Plasterboard

Fixing to Irregular Wall Surfaces

For uneven walls, furring channels with clips can be used to create a true surface. The BETA-FIX clips have a number of slots to allow adjustments of about 20mm.

- 1 Use a chalk line to mark the alignment of the furring channels. Fix the tracks to floor and ceiling with fasteners/anchors at 600mm centres.
- 2 Mark the furring channel positions on the wall vertically, at each end and at a maximum of 600mm apart.



- 3 Install the clips with masonry anchors at 900mm maximum centres up the wall.
- 4 Install the furring channels into the tracks and clips. Use the clip 'slot' that gives the best alignment and check with a spirit level and straight edge.
- 5 Fix plasterboard across the furring channels with screws and adhesive as for fixing to studs. Refer to DIY guide – Fixing Gyprock™ Plasterboard to Stud Walls.

Jointing & Finishing

Refer to the DIY guides – Jointing Gyprock™ Plasterboard, and Finishing Corners in Gyprock™ Plasterboard for details.

For more information or to contact your nearest CSR Gyprock™ distributor call 1300 306 556 or visit www.gyprock.com.au

Your local stockist:

CSR™